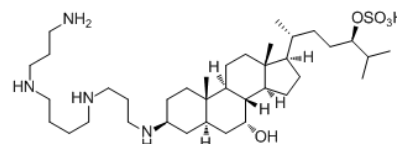


Product Name : MSI-1436
Cat. No. : PC-42921
CAS No. : 186139-09-3
Molecular Formula : C₃₇H₇₂N₄O₅S
Molecular Weight : 685.0564
Target : Protein Phosphatase/PTP
Solubility : 10 mM in DMSO



Biological Activity

MSI-1436 (Trodsquemine) is a non-competitive, allosteric inhibitor of **PTP1B** with K_i of 0.6 μ M for PTP1B 1-405. MSI-1436 antagonizes HER2 signaling, inhibits tumorigenesis in xenografts and abrogates metastasis in the NDL2 mouse model of breast cancer.

References

- Krishnan N, et al. *Nat Chem Biol*. 2014 Jul;10(7):558-66.
Qin Z, et al. *Biochem Biophys Res Commun*. 2015 Feb 27;458(1):21-7.

Caution: Product has not been fully validated for medical applications. Lab Use Only!

E-mail: tech@probechem.com